

flexible glass door with parking

PARKING SYSTEM



INAL® Frameless Movable Glass System, parking-type, with middle size aluminum rail, 52mm x 59mm with embedded stainless steel rod & certified stainless steel rollers.

Unlimited design possibilities for parking areas (vertical, diagonal or parallel parkings) according to customer's requests and needs. Weather proofing along the entire length of the panel.

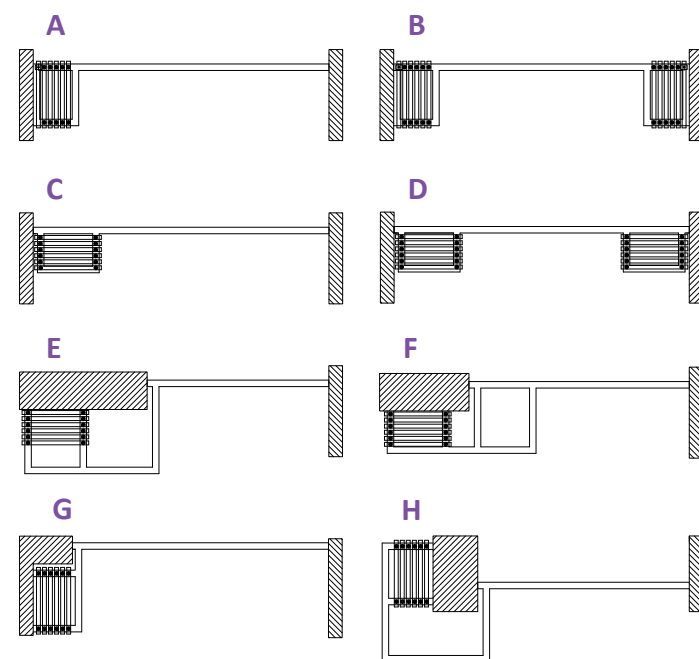
A minimal solution for a movable facade for café, restaurants, shops, hotels e.t.c. Locking with Stainless steel front or side bolts or locking in a wide range, also locking with double locking lock mechanism.

Available in Do It Yourself (DIY) or Made to measure upon request.

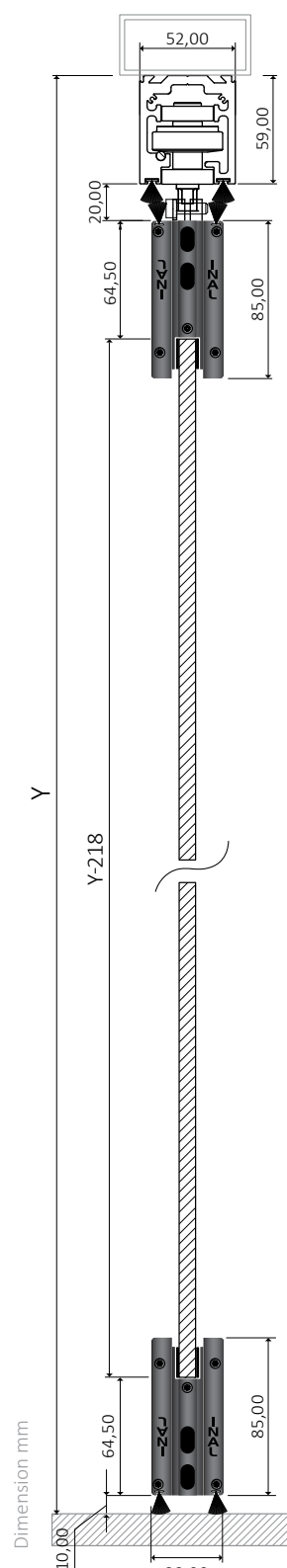
technical specifications

GLASS TYPE	TEMPERED OR LAMINATED
GLASS THICKNESS	10mm
PANEL WEIGHT	max 90kg
MAXIMUM PANEL WIDTH	1,00m
MAXIMUM OPENING HEIGHT	3,00m
TYPE OF PR86/R60 SYSTEM	PRS86/R60 (SIDE LOCKING)
FINISHING	NATURAL ANODIZED, SATIN ANODIZED, RAL POWDER COATING
WITHOUT FLOOR GUIDE, NO GLASS CUTTINGS REQUIRED	

PANEL STORAGE/PARKING APPLICATIONS



MULTIPLE CHOICES DEPENDING ON YOUR NEEDS



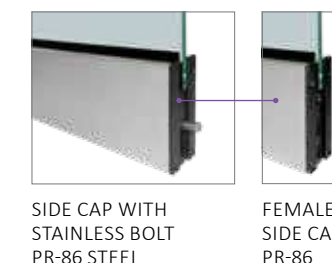
NO GLASS CUTTINGS REQUIRED

locking options

FRONT LOCKING



SIDE LOCKING



GLASS (TEMPERED) DIMENSION CALCULATION

Glass height (mm) = $Y - 220\text{mm}$, (Y = from the bottom of the steel beam)

Opening width (mm) = O.W. Number of panels (pcs) = P.N.

Glass width (mm) = $\{O.W. - [(P.N. \times 4\text{mm}) + 25\text{mm}]\} / P.N.$