

# folding glass door with heavy duty rail

## FOLDING SYSTEM



INAL® Frameless Folding door System, heavy type, with heavy duty certified aluminum rail 70 mm x 80 mm with embedded stainless steel rod & certified stainless steel rollers.

INAL Folding System FN-200 use a heavy duty aluminum hinge at the upper and lower profile. The special design and high quality of hinges ensure functionality, durability and lifetime operation.

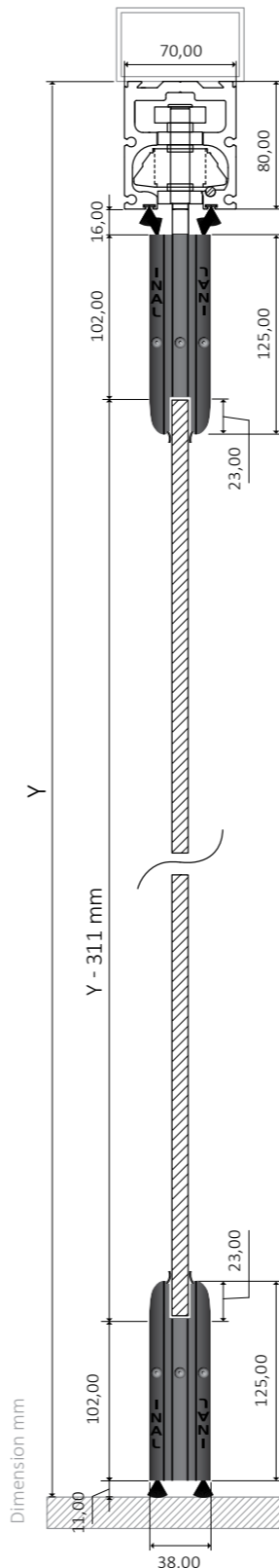
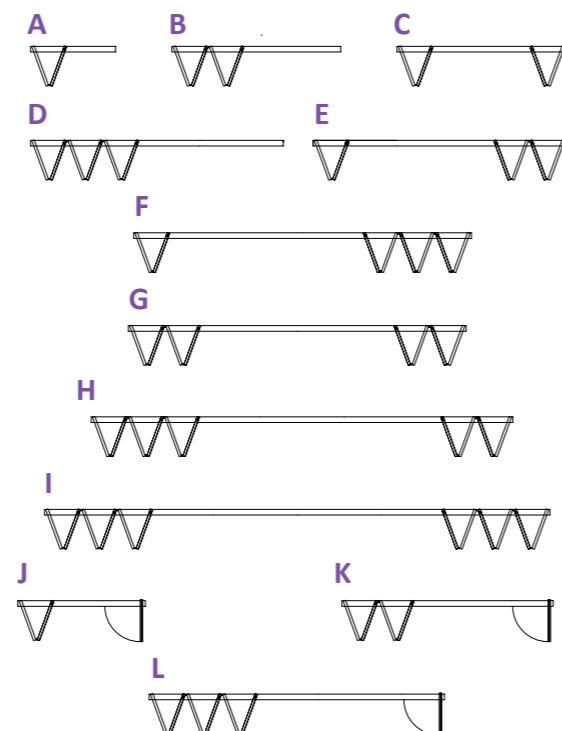
Weather proofing with polycarbonate or PVC profiles between the panels. Locking with Stainless steel front or side bolts or locking with double locking lock mechanism.

Available in Do It Yourself (DIY) or Made to measure upon request.

## technical specifications

GLASS TYPE	TEMPERED OR LAMINATED
GLASS THICKNESS	10- 12mm
PANEL WEIGHT	max 90kg
MAXIMUM PANEL WIDTH	1,00m
MAXIMUM OPENING HEIGHT	3,50m
TYPE OF FN-200 SYSTEM	FRONT LOCKING
FINISHING	NATURAL ANODIZED, SATIN ANODIZED, RAL POWDER COATING
WITHOUT FLOOR GUIDE, NO GLASS CUTTINGS REQUIRED	

## PANEL STORAGE/FOLDING APPLICATIONS



HEAVY DUTY ALUMINUM RAIL 70x80 WITH EMBEDDED STAINLESS STEEL ROD  
**STRENGTH TEST:** 3.450kgr (165/049.01-1 N.T.U.A.).



STAINLESS STEEL ROLLER PR200 WITH CLAMP SUPPORT.  
**STRENGTH TEST:** 4.600kgr (165/049.01-2 N.T.U.A.).



HEAVY DUTY HINGES BETWEEN THE PANELS.



NO FLOOR GUIDE REQUIRED

NO GLASS CUTTINGS REQUIRED

## locking options

### FRONT LOCKING



LOCK MECHANISM WITH EUROCYLINDER KEY



LOCK MECHANISM WITH HALF CYLINDER AND KNOB



STAINLESS BOLT



DURABILITY AND LIFETIME OPERATION

GLASS (TEMPERED) DIMENSION CALCULATION	
Glass height (mm) = $Y - 311\text{mm}$ , ( Y = from the bottom of the steel beam)	
Opening width (mm) = O.W.	Number of panels (pcs) = P.N.
Glass width (mm) = $\{O.W. - [(P.N. \times 3\text{mm}) + 20\text{mm}]\} / P.N.$	

GLASS (LAMINATED) DIMENSION CALCULATION	
Glass height (mm) = $Y - 295\text{mm}$ , ( Y = from the bottom of the steel beam)	
Opening width (mm) = O.W.	Number of panels (pcs) = P.N.
Glass width (mm) = $\{O.W. - [(P.N. \times 3\text{mm}) + 20\text{mm}]\} / P.N.$	